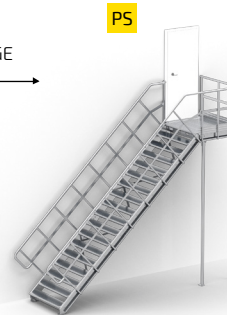
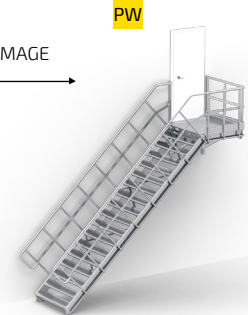




MIRROR IMAGE



MIRROR IMAGE



PAGE 2

PAGE 3

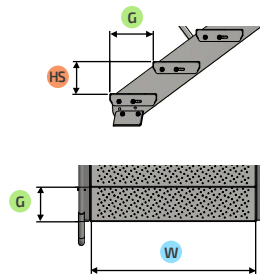
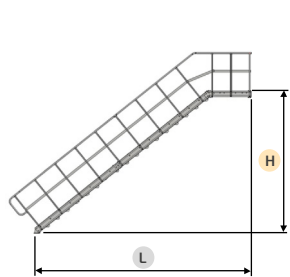
PAGE 4

PAGE 4

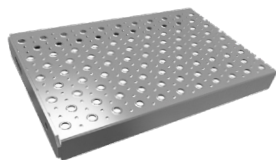
PAGE 4

PAGE 4

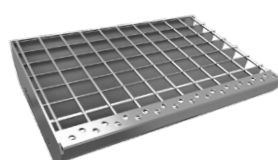
For variants **BP**, **P** there is a possibility to install one-sided railing.



Available step filling options:



Profiled grating - HDG



Welded grating - HDG

Additional option - internal handrail



Internal stairs
ZN



External stairs
ZN + RAL 7040



Number of steps	TYPE 33								TYPE 37								TYPE 40								
	G = 260 mm				HS = 171 mm				G = 250 mm				HS = 185,5 mm				G = 238 mm				HS = 200 mm				
	Variant	BP	P	LS/PS	LW/PW	Variant	BP	P	LS/PS	LW/PW	Variant	BP	P	LS/PS	LW/PW	Variant	BP	P	LS/PS	LW/PW					
	W →	800	800	1100	800	1100	800	1100	800	1100	800	1100	800	1100	800	1100	800	1100	800	1100	800	1100			
	H ↓	1200	1000	1200	1000	1200	1000	1200	1000	1200	1000	1200	1000	1200	1000	1200	1000	1200	1000	1200	1000	1200			
		L ↓				L ↓				L ↓				L ↓				L ↓							
2		330	537	1340	1610	1390	1660	-	-	370	515	1318	1588	1368	1638	-	-	390	537	1340	1610	1390	1660	-	-
3		500	797	1600	1870	1650	1920	-	-	560	767	1570	1840	1620	1890	-	-	590	767	1570	1840	1620	1890	-	-
4		670	1057	1860	2130	1910	2180	-	-	740	1017	1820	2090	1870	2140	-	-	790	1007	1810	2080	1860	2130	-	-
5		840	1317	2120	2390	2170	2440	-	-	930	1267	2070	2340	2120	2390	2120	2390	990	1247	2050	2320	2100	2370	2100	2370
6		1010	1577	2380	2650	2430	2700	2430	2700	1110	1507	2310	2580	2360	2630	2360	2630	1190	1487	2290	2560	2340	2610	2340	2610
7		1180	1837	2640	2910	2690	2960	2690	2960	1300	1757	2560	2830	2610	2880	2610	2880	1390	1717	2520	2790	2570	2840	2570	2840
8		1360	2097	2900	3170	2950	3220	2950	3220	1490	2007	2810	3080	2860	3130	2860	3130	1590	1957	2760	3030	2810	3080	2810	3080
9		1530	2347	3150	3420	3200	3470	3200	3470	1670	2257	3060	3330	3110	3380	3110	3380	1790	2197	3000	3270	3050	3320	3050	3320
10		1700	2607	3410	3680	3460	3730	3460	3730	1860	2507	3310	3580	3360	3630	3360	3630	1990	2437	3240	3510	3290	3560	3290	3560
11		1870	2867	3670	3940	3720	3990	3720	3990	2040	2757	3560	3830	3610	3880	3610	3880	2190	2677	3480	3750	3530	3800	3530	3800
12		2040	3127	3930	4200	3980	4250	3980	4250	2230	3007	3810	4080	3860	4130	3860	4130	2390	2907	3710	3980	3760	4030	3760	4030
13		2210	3387	4190	4460	4240	4510	4240	4510	2410	3257	4060	4330	4110	4380	4110	4380	2590	3147	3950	4220	4000	4270	4000	4270
14		2380	3647	4450	4720	4500	4770	4500	4770	2600	3507	4310	4580	4360	4630	4360	4630	2780	3387	4190	4460	4240	4510	4240	4510
15		2550	3907	4710	4980	4760	5030	4760	5030	2780	3747	4550	4820	4600	4870	4600	4870	2980	3627	4430	4700	4480	4750	4480	4750
16		2720	4167	4970	5240	5020	5290	5020	5290	2970	3997	4800	5070	4850	5120	4850	5120	3180	3867	4670	4940	4720	4990	4720	4990
17		2890	4437	5240	5510	5290	5560	5290	5560	3160	4247	5050	5320	5100	5370	5100	5370	3380	4097	4900	5170	4950	5220	4950	5220
18		3060	4687	5490	5760	5540	5810	5540	5810	3340	4497	5300	5570	5350	5620	5350	5620	3580	4337	5140	5410	5190	5460	5190	5460

Other RAL colours available on demand (+2% of price, +2 weeks of delivery time)

VARIANT WITH ONE-SIDED RAILING

LOWER PRICES UP TO 33%

PRICE LIST in EURO

Step width ^w	800				900				1000				1100				1200				Additional handrail		
	Step filling		Welded grating		Profiled grating		Welded grating		Profiled grating		Welded grating		Profiled grating		Welded grating		Profiled grating		Welded grating				
	Step type	internal	external	internal	external	internal	external	internal	external	internal	external	internal	external	internal	external	internal	external	internal	external	internal	external	internal	external
Number of steps	2	307*	330*	346*	369*	322*	346*	397*	421*	338*	363*	419*	444*	353*	379*	440*	466*	402*	429*	453*	480*	-	-
	3	458	501	504	548	478	522	577	621	498	543	606	651	519	564	636	681	590	636	651	698	-	-
	4	527	574	581	628	552	600	676	724	578	626	713	762	603	652	750	799	696	746	769	819	-	-
	5	617	670	679	732	647	701	796	850	677	732	840	894	708	763	884	939	822	878	906	962	59	68
	6	710	771	779	840	744	807	918	980	780	843	969	1032	815	879	1021	1085	951	1016	1046	1111	71	83
	7	809	877	886	953	852	921	1050	1119	895	965	1112	1182	938	1009	1174	1245	1100	1172	1205	1278	71	83
	8	887	961	972	1045	935	1010	1158	1233	983	1059	1227	1303	1031	1109	1296	1374	1214	1293	1331	1410	81	96
	9	982	1062	1074	1154	1034	1116	1282	1363	1087	1170	1358	1441	1140	1224	1435	1519	1346	1431	1473	1558	85	101
	10	1071	1158	1170	1258	1128	1217	1401	1490	1187	1277	1485	1575	1245	1337	1570	1662	1481	1575	1619	1714	85	101
	11	1212	1315	1319	1422	1275	1379	1572	1676	1339	1444	1664	1769	1403	1509	1757	1864	1659	1769	1809	1918	95	111
	12	1281	1390	1395	1504	1349	1459	1671	1780	1425	1538	1777	1890	1493	1607	1877	1991	1765	1880	1925	2040	105	124
	13	1375	1493	1497	1615	1455	1577	1802	1923	1529	1651	1908	2031	1602	1726	2016	2139	1903	2030	2074	2201	110	130
	14	1448	1573	1578	1703	1526	1652	1897	2023	1604	1732	2011	2139	1690	1821	2133	2264	2005	2137	2187	2320	110	130
	15	1538	1673	1675	1810	1620	1757	2016	2153	1703	1842	2137	2276	1794	1936	2267	2409	2131	2274	2324	2467	115	135
	16	1606	1748	1751	1893	1694	1837	2114	2258	1790	1936	2251	2397	1878	2025	2380	2528	2244	2395	2448	2599	124	147
	17	1709	1862	1861	2014	1809	1965	2254	2410	1902	2059	2390	2548	2003	2163	2535	2695	2384	2546	2598	2760	129	153
	18	1782	1942	1941	2102	1879	2041	2349	2511	1977	2140	2493	2655	2083	2249	2645	2811	2486	2653	2712	2879	129	153

*Variants without railings

VARIANT WITH TWO-SIDED RAILING

Number of steps	2	307*	330*	346*	369*	322*	346*	397*	421*	338*	363*	419*	444*	353*	379*	440*	466*	402*	429*	453*	480*	-	-
	3	542	602	588	648	562	623	661	722	582	644	690	752	602	665	719	782	673	737	735	799	-	-
	4	613	678	667	732	638	704	762	828	664	730	799	865	689	756	836	903	782	850	855	923	-	-
	5	724	798	786	859	754	828	903	977	784	859	947	1022	815	890	991	1067	929	1006	1013	1090	59	68
	6	841	930	910	999	876	965	1050	1139	911	1001	1101	1191	947	1037	1153	1243	1083	1175	1178	1269	71	83
	7	943	1037	1019	1114	985	1081	1184	1279	1029	1125	1245	1342	1072	1170	1307	1405	1233	1332	1339	1438	71	83
	8	1032	1137	1116	1221	1080	1186	1302	1408	1128	1235	1372	1479	1176	1284	1441	1549	1359	1469	1476	1585	81	96
	9	1144	1258	1236	1350	1196	1312	1444	1559	1249	1366	1520	1637	1302	1420	1597	1715	1508	1627	1635	1754	85	101
	10	1234	1356	1334	1456	1292	1416	1564	1688	1351	1475	1649	1774	1409	1535	1734	1860	1644	1774	1783	1912	85	101
	11	1411	1556	1517	1662	1473	1620	1770	1917	1537	1684	1862	2010	1594	1742	1948	2096	1857	2009	2007	2159	95	111
	12	1481	1632	1595	1747	1549	1701	1871	2023	1625	1781	1977	2133	1693	1850	2077	2234	1965	2123	2125	2283	105	124
	13	1600	1765	1722	1887	1680	1848	2027	2195	1753	1923	2133	2303	1827	1997	2240	2411	2128	2302	2299	2473	110	130
	14	1671	1843	1801	1972	1749	1922	2120	2293	1827	2002	2234	2408	1913	2090	2356	2534	2228	2407	2411	2589	110	130
	15	1783	1970	1920	2107	1865	2054	2261	2450	1949	2139	2383	2573	2039	2232	2512	2705	2377	2571	2570	2764	115	135
	16	1853	2047	1998	2192	1941	2136	2361	2556	2037	2235	2498	2696	2125	2324	2627	2827	2492	2694	2696	2898	124	147
	17	1981	2192	2133	2344	2081	2295	2527	2740	2174	2390	2663	2878	2275	2493	2807	3025	2656	2876	2871	3090	129	153
	18	2053	2270	2212	2430	2150	2369	2620	2839	2248	2468	2763	2984	2354	2577	2916	3139	2757	2981	2983	3207	129	153

*Variants without railings

Nett prices in EUR. Price list valid from 01.03.2023 until further notice.

VARIANT WITH ONE-SIDED RAILING

LOWER PRICES UP TO 33%

PRICE LIST in EURO

Step width ^w	800				900				1000				1100				1200				Additional handrail			
	Step filling		Welded grating		Profiled grating		Welded grating		Profiled grating		Welded grating		Profiled grating		Welded grating		Profiled grating		Welded grating					
	Step type	internal	external	internal	external	internal	external	internal	external	internal	external	internal	external	internal	external	internal	external	internal	external	internal	external	internal	external	
Number of steps	2	639*	706*	724*	792*	671*	740*	820*	889*	705*	775*	867*	937*	823*	892*	1029*	1098*	963*	1033*	1057*	1128*	-	-	
	3	706*	776*	775*	846*	743*	815*	917*	989*	782*	855*	971*	1044*	905*	977*	1141*	1213*	1066*	1140*	1172*	1245*	-	-	
	4	815	899	892	976	858	943	1056	1141	1243	901	987	1118	1204	1037	1123	1302	1389	1220	1308	1337	1425	-	-
	5	903	993	987	1077	951	1042	1174	1264	1335	999	1091	1243	1335	1136	1226	1431	1521	1341	1432	1469	1560	59	68
	6	1001	1100	1093	1191	1054	1153	1301	1401	1479	1107	1208	1378	1479	1243	1342	1567	1666	1470	1570	1608	1709	71	83
	7	1070	1172	1169	1271	1127	1230	1400	1503	1588	1185	1289	1484	1588	1330	1432	1684	1787	1579	1683	1728	1832	71	83
	8	1148	1256	1255	1363	1211	1320	1508	1617	1709	1273	1384	1599	1709	1423	1532	1807	1916	1694	1804	1854	1965	81	96
	9	1233	1347	1347	1461	1300	1416	1622	1737	1837	1368	1485	1721	1837	1531	1648	1945	2061	1824	1942	1995	2113	85	101
	10	1328	1449	1449	1571	1400	1523	1747	1870	1978	1473	1598	1853	1978	1636	1760	2080	2204	1959	2087	2141	2269	85	101
	11	1469	1606	1599	1735	1547	1685	1918	2056	2171	1625	1764	2032	2171	1804	1945	2277	2418	2141	2284	2334	2477	95	111
	12	1538	1681	1675	1818	1620	1764	2016	2160	2292	1711	1858	2145	2292	1887	2035	2390	2537	2246	2395	2450	2599	105	124
	13	1630	1782	1774	1927	1725	1880	2146	2301	2431	1813	1970	2274	2431	1993	2149	2526	2681	2382	2541	2597	2756	110	130
	14	1709	1868	1861	2020	1801	1962	2247	2407	2545	1894	2056	2383	2545	2082	2245	2644	2807	2485	2649	2711	2875	110	130
	15	1798	1968	1958	2128	1896	2067	2366	2537	2682	1994	2166	2509	2682	2189	2363	2780	2955	2614	2789	2850	3026	115	135
	16	1867	2043	2034	2210	1969	2147	2464	2641	2803	2080	2260	2622	2803	2273	2454	2895	3075	2728	2911	2975	3159	124	147
	17	1960	2147	2134	2322	2075	2265	2594	2784	2944	2183	2374	2752	2944	2393	2587	3044	3238	2862	3057	3121	3315	129	153
	18	2039	2233	2221	2415	2151	2347	2695	2891	3058	2264	2461	2860	3058	2475	2673	3155	3354	2965	3165	3235	3435	129	153

*Variant with railing on a landing only

VARIANT WITH TWO-SIDED RAILING

Number of steps	2	744*	835*	829*	920*	777*	869*	926*	1017*	810*	903*	973*	1066*	935*	1029*	1141*	1235*	1075*	1170*	1169*	1264*	-	-	
	3	811*	905*	881*	974*	849*	943*	1023*	1117*	887*	983*	1077*	1173*	1017*	1114*	1253*	1349*	1179*	1276*	1284*	1382*	-	-	
	4	963	1080	1040	1156	1006	1123	1204	1322	1409	1049	1168	1266	1385	1199	1322	1464	1587	1382	1507	1499	1623	-	-
	5	1068	1193	1153	1277	1116	1242	1339	1465	1564	1164	1291	1408	1535	1305	1432	1600	1727	1510	1639	1638	1766	59	68
	6	1191	1331	1283	1423	1244	1385	1492	1633	1729	1297	1439	1568	1710	1437	1579	1762	1904	1664	1808	1803	1946	71	83
	7	1262	1405	1361	1504	1319	1464	1592	1736	1837	1377	1523	1676	1821	1529	1676	1883	2030	1778	1926	1927	2076	71	83
	8	1351	1505	1458	1611	1413	1568	1710	1865	1974	1476	1632	1802	1958	1633	1790	2017	2174	1904	2062	2064	2223	81	96
	9	1457	1620	1571	1734	1524	1689	1846	2010	2119	1592	1758	1945	2110	1766	1934	2180	2348	2059	2228	2230	2400	85	101
	10	1553	1724	1675	1846	1626	1798	1973	2145	2299	1699	1873	2079	2253	1873	2049	2316	2493	2196	2375	2378	2557	85	101
	11	1730	1923	1859	2053	1807	2002	2178	2374	2582	1886	2082	2292	2489	2078	2281	2551	2754	2415	2619	2608	2812	95	111
	12	1800	2000	1937	2137	1883	2084	2279	2480	2694	1974	2178	2407	2612	2163	2372	2666	2875	2522	2733	2726	2937	105	124
	13	1913	2127	2058	2271	2008	2225	2429	2646	2872	2096	2315	2557	2776	2284	2504	2816	3036	2673	2895	2887	3110	110	130
	14	1990	2211	2143	2363	2083	2305	2528	2750	2984	2176	2399	2664	2887	2372	2598	2933	3160	2774	3003	3000	3228	110	130
	15	2102	2338	2262	2498	2199	2437	2669	2907	3154	2297	2536	2813	3051	2503	2747	3095	3338	2928	3173	3165	3410	115	135
	16	2172	2415	2340	2582	2275	2519	2769	3013	3264	2385	2632	2928	3175	2590	2840	3211	3461	3044	3298	3292	3545	124	147
	17	2294	2554	2469	2729	2409	2672	2929	3191	3451	2517	2781	3087	3351	2739	3007	3390	3658	3207	3477	3466	3736	129	153
	18	2372	2638	2554	2820	2484	2752	3028	3296	3564	2597	2866	3194	3462	2819	3093	3499	3773	3309	3585	3579	3854	129	153

*Variant with railing on a landing only

Nett prices in EUR. Price list valid from 01.03.2023 until further notice.

Step width w	800				900				1000				1100				1200				Additional handrail		
	Profiled grating		Welded grating		Profiled grating		Welded grating		Profiled grating		Welded grating		Profiled grating		Welded grating		Profiled grating		Welded grating				
Step type	internal	external	internal	external	internal	external	internal	external	internal	external	internal	external	internal	external	internal	external	internal	external	internal	external	internal	external	
Number of steps	2	1073*	1184*	1138*	1249*	1107*	1220*	1259*	1372*	1141*	1256*	1307*	1422*	1278*	1393*	1488*	1603*	1418*	1536*	1517*	1634*	-	-
	3	1143*	1258*	1216*	1330*	1179*	1295*	1356*	1472*	1218*	1336*	1411*	1529*	1360*	1478*	1599*	1718*	1522*	1642*	1632*	1752*	-	-
	4	1348	1495	1428	1575	1384	1531	1586	1732	1428	1577	1648	1797	1591	1745	1861	2015	1766	1919	1887	2040	-	-
	5	1449	1605	1536	1692	1490	1645	1716	1872	1539	1696	1786	1944	1709	1872	2008	2171	1915	2080	2047	2211	59	68
	6	1618	1796	1713	1891	1657	1831	1908	2082	1711	1887	1985	2162	1865	2041	2193	2370	2093	2271	2235	2414	71	83
	7	1688	1870	1791	1973	1732	1910	2008	2186	1791	1971	2092	2273	1972	2159	2330	2518	2222	2412	2375	2565	71	83
	8	1787	1982	1897	2092	1826	2015	2126	2315	1890	2080	2219	2409	2057	2248	2445	2636	2329	2522	2493	2686	81	96
	9	1895	2096	2013	2214	1964	2166	2289	2492	2033	2237	2389	2593	2214	2420	2631	2837	2508	2716	2683	2891	85	101
	10	1992	2200	2117	2326	2065	2276	2415	2626	2140	2353	2523	2736	2321	2535	2768	2982	2645	2863	2831	3049	85	101
	11	2172	2403	2305	2536	2251	2484	2625	2859	2330	2565	2740	2976	2527	2766	3003	3243	2865	3106	3062	3303	95	111
	12	2305	2552	2445	2692	2388	2637	2788	3037	2466	2717	2904	3154	2674	2929	3181	3436	3034	3291	3242	3499	105	124
	13	2414	2674	2562	2822	2510	2774	2934	3198	2599	2866	3063	3330	2797	3065	3333	3601	3187	3458	3406	3677	110	130
	14	2491	2758	2647	2914	2585	2854	3033	3303	2679	2950	3170	3442	2884	3159	3450	3724	3288	3565	3518	3794	110	130
	15	2607	2889	2770	3052	2705	2990	3178	3463	2804	3091	3323	3610	3017	3308	3613	3903	3443	3735	3684	3976	115	135
	16	2702	2995	2873	3165	2805	3100	3303	3598	2917	3216	3463	3762	3128	3429	3753	4054	3584	3888	3835	4139	124	147
	17	2820	3130	2998	3308	2936	3250	3459	3773	3045	3361	3618	3934	3274	3593	3929	4248	3744	4065	4006	4327	129	153
	18	2898	3214	3083	3400	3011	3329	3558	3877	3125	3445	3725	4045	3353	3677	4038	4362	3845	4171	4118	4444	129	153

*Variant with railing on a landing only

VARIANTS **LW**, **PW**

Number of steps	2	-	-	-	-	-	-	-	-	-	-	-	-	-	-	-	-	-	-	-	-	-	
	3	-	-	-	-	-	-	-	-	-	-	-	-	-	-	-	-	-	-	-	-	-	
	4	-	-	-	-	-	-	-	-	-	-	-	-	-	-	-	-	-	-	-	-	-	
	5	1392	1552	1480	1640	1444	1607	1670	1833	1496	1661	1743	1909	1654	1820	1952	2119	1876	2045	2007	2176	59	68
	6	1519	1694	1614	1789	1576	1753	1827	2004	1633	1813	1907	2088	1789	1971	2118	2299	2033	2217	2176	2360	71	83
	7	1589	1768	1692	1870	1651	1832	1927	2108	1713	1897	2015	2199	1878	2063	2236	2422	2144	2332	2297	2485	71	83
	8	1678	1867	1789	1977	1745	1937	2046	2237	1812	2006	2141	2335	1982	2178	2370	2566	2270	2468	2434	2632	81	96
	9	1781	1979	1898	2097	1852	2053	2177	2378	1924	2128	2280	2484	2108	2314	2526	2731	2418	2627	2593	2802	85	101
	10	1877	2083	2002	2208	1954	2163	2304	2513	2031	2243	2414	2626	2215	2429	2662	2876	2555	2773	2741	2959	85	101
	11	2057	2286	2190	2419	2139	2371	2514	2745	2221	2456	2631	2866	2421	2660	2898	3137	2775	3017	2972	3214	95	111
	12	2128	2363	2268	2503	2214	2453	2614	2852	2309	2552	2747	2989	2506	2752	3012	3258	2882	3131	3090	3338	105	124
	13	2237	2486	2385	2634	2336	2590	2760	3014	2428	2685	2893	3149	2629	2887	3165	3423	3035	3297	3253	3516	110	130
	14	2314	2570	2470	2725	2411	2669	2859	3118	2508	2769	2999	3261	2716	2981	3282	3547	3136	3404	3366	3633	110	130
	15	2429	2701	2592	2864	2531	2805	3004	3279	2633	2910	3152	3429	2849	3130	3444	3726	3291	3575	3531	3815	115	135
	16	2500	2778	2670	2948	2606	2887	3105	3385	2721	3006	3267	3552	2935	3223	3560	3848	3406	3699	3658	3950	124	147
	17	2618	2913	2796	3091	2737	3036	3260	3559	2849	3151	3422	3724	3081	3387	3736	4042	3566	3875	3829	4138	129	153
	18	2695	2997	2881	3182	2812	3116	3359	3664	2929	3236	3529	3836	3160	3472	3845	4156	3668	3982	3941	4255	129	153

Nett prices in EUR. Price list valid from 01.03.2023 until further notice.